



Washington Guild of Goldsmiths

Newsletter

Spring Issue

2014

HIGHLIGHTS

President's Message	1
Creative Crafts Council News	1
Membership Information	2
Member News	3
WGG Website News	4
METALWORK 2014 News	4
3rd Tuesday & Workshops	5
Workshop Applications	6 & 7
Touchstone Center News, Green Jewelry News & Online Jewelry Info Sites	8
Calls for Entries	9
Board Members Contact	10
2014 Membership Form	11
Bench Tips (online only)	13

PRESIDENT'S MESSAGE

Dear Members,

After a record-breaking, long winter, spring is here at last! And because it is an "even" year, 2014, jurying for the WGG Biennial Show, METALWORK 2014 is just around the corner! Hope you have submitted your applications to Mia Schulman and are putting the finishing touches on your pieces to be submitted on MAY 3rd! I want to thank everyone for their hard work in preparing the show which promises to be the best WGG METALWORK Show ever.

We need to schedule our annual membership meeting, and I'd like to hear from each of you with your preference for where and when to hold it. Our 3rd Tuesday events continue to enrich our Guild's depth, and Nick Barnes is ALWAYS looking for your suggestions for the next month. Please share your inspiration with him.

Also, a reminder that the Society of North American Goldsmiths (SNAG) is taking registrations for this year's conference in Minneapolis, starting April 23. We hope you'll consider participating in this valuable conference. SNAG's recent newsletter shared this overview from Lifetime Achievement Award Winner, Bob Ebendorf:

"Once again SNAG will be presenting our yearly conference this year in Minneapolis. It is a wonderful, creative and rich gathering of the jewelers, collectors, gallery representatives, and other metal enthusiasts. SNAG is our national organization that holds the creative energy and the contemporary vision of our metalsmithing and jeweler field. The conference is a wonderful place to see old friends and make new connections. Each year there is a rich program of presenters giving talks, workshops and demonstrations."

I am looking forward to seeing and talking with each of you in the very near future. Happy Spring, happy rebirth!

--Johnnie Gins, WGG President

CREATIVE CRAFTS COUNCIL (CCC) NEWS

By Winifred Anthony

Eileen Martin, who has run the CCC for many years, notified the member guilds that she would be stepping down after the last show. Unfortunately, we have been unable to find someone to take over her position, with the result that we are now faced with the possibility that the CCC would no longer exist. There is still a chance that this will not happen, and the options are being investigated. All the guilds involved are being asked to sound out their members for suggestions of candidates.

If any of our WGG members would be interested in taking on a position in the CCC, please contact me as soon as possible and I will ensure that you are given the particulars of what the duties would be.

Winifred Anthony: e-mail: winifred.anthony@verizon.net. Tel.: 301-598-3710.

WGG MEMBERSHIP NEWS & INFORMATION

DUES REMINDER:

Membership dues for the Washington Guild of Goldsmiths are valid for a calendar year (January – December) and are **subject to renewal on January 1 of each year** unless you bought a 2-year membership in 2013 which will NOT BE OFFERED anymore. **TO RENEW YOUR MEMBERSHIP** for 2014, please use the application form on page 11, and on our website, www.washingtonguildofgoldsmiths.com

Note that WGG annual dues, beginning in 2015, will be increased for the first time in 10 years. Details to follow.

January – March

WELCOME NEW MEMBERS:

Sherry Chaples, Ann Davis, Barbara Hance, Daphne Y. Jefferson, Seon Lyu, Beth Rosenheim, Wendy Ross, EunJu Lee and Christina Rodriguez

Membership Benefits:

Membership benefits include, but are not limited to: participation in monthly “3rd Tuesday” meetings *that stir your creative juices*, receipt of **quarterly newsletters** and other **Guild e-mailings** (i.e. Calls For Entries, business opportunities, etc.), inclusion in the annual **Membership Directory** (published each year), opportunity to **participate in the biennial METALWORKS Show** sponsored by the Guild, and ability to participate (at **reduced rates**) in **workshops** offered by the Guild and Creative Metalworks School. In addition, our Guild offers a **free 1-web-page posting on our WGG website** for members in good standing. This can be used to feature several pieces of your work in addition to a brief artist statement. Submission requirements are provided on the website page.

Help recruit members:

We encourage you to invite other jewelry associates to participate in our activities and to join our Guild. An Application Form is included with this newsletter and also is available on our Guild web page: www.washingtonguildofgoldsmiths.com. Completed applications and dues payments should be mailed to our Treasurer. Questions may be addressed to our Membership Coordinator. Contact information for these individuals is provided on the Membership Application Form.

Keep your contact information up to date:

Please remember to keep the Membership Coordinator informed of any changes to your membership information (name, address, email, etc.), to be sure that you receive all WGG mailings. You can send the information to the Membership Coordinator as shown on the Application Form.

Receiving Email notices from the WGG?

To save on postage and processing time (we're all volunteers, and we haven't raised the dues in a long time), members of the WGG Board use the email method of informing members of items of interest between Newsletter publication times. If you do not yet have an email account, please set one up at your convenience. Many are free (e.g. Yahoo, gmail) and computer access is available at your public library. If you are using a “spam filter” on your own computer and have not entered the email addresses of the WGG Board members into your email directory, the notices may be directed to your email spam folder. If you delete messages in your spam folder without reviewing them first, you may miss important news items from the Guild (for example: shows and workshops you can attend, key application and membership renewal deadlines, newsletter submission reminders, etc.). Each quarterly Newsletter lists the Board members with their respective email addresses.

Get *your* PERSONAL FREE WEB PAGE on the WGG Guild website.

Information on how to set up a personal web page can be found at the bottom of our website's Member Information Page. Go to:

<http://www.washingtonguildofgoldsmiths.com/mbrshp.htm>

RIGHT NOW it is time to *UPDATE YOUR MEMBER PAGE*. The Quarterly update of the website will be done in January 2014; send your updates to Bodil Lund, bclund@cox.net

MEMBER NEWS

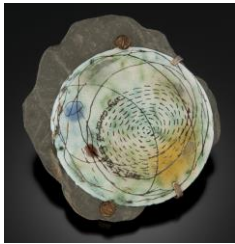
WGG Members – Please let us know about your achievements, recognition and awards. It is not bragging and will certainly encourage your co-members in their artistic endeavors.

KC Gray Siebert, our wonderful Membership Coordinator, deserves the sincere praise and appreciation from each of us WGG members. Due to family health challenges, she has had to resign her position. **Ilana Rappaport**, a long time WGG member has kindly agreed to take on the Membership Coordinator job. Thanks so much, Ilana!

Shelly Shen is excited to report that her work has been accepted for international exhibition by the 27th International Cloisonné Jewelry Contest held at the Ueno Royal Museum in Tokyo, Japan. The work will be on display from April 8th to the 14th. She was also selected for the Award for Encouragement. Congratulations, Shelly! Pictures follow:



Anne Havel continues to be very productive and successful. Congratulations, Anne! Recently, her work has been shown at **Material Matters: Making Connections**, part of the ECU Metals Symposium in Greenville NC from January thru February 2014. Molten Fine Line Creative Arts Center in St.Charles, IL in February. The upcoming book, **Behind the Brooch** by Lorena Angulo, Schiffer Publishing will include Anne's work. She also will be teaching Torch-fired enameling at Littleton Studio School, Littleton, NH, Enamel Guild North East Conference, Westchester Community College Art Center, White Plains, NY, Touchstone Center for Crafts, Farmington, PA, Peters Valley, Layton, NJ and the Guilded Lynx, in Ridgefield, CT.



Eileen Martin reports that she is still busy and having more fun than anyone has a right to have! Right now, her work is on display at the [Glenview Mansion](#) and [Pyramid Atlantic](#). She's even active in social media, and you can follow her work at her website, www.martinglasscreations.com, [Facebook](#) and [Twitter](#). Here are samples of her recent work.



More MEMBER NEWS

We are proud to announce that long time WGG member and supporter, **Jim Cohen** was featured in an Artist Profile in the prestigious Niche Magazine, Winter 2014 issue! The profile covered his transition from Pentagon attorney to silversmith starting at the Torpedo Factory. Jim continues to live at "5 Acres of Heaven" outside Santa Fe, NM. See the complete profile at <http://www.nichemagazine.com/2014/01/artist-profile-jim-cohen/>
Congratulations, Jim!

WGG WEBSITE NEWS

Be sure to visit your site: www.washingtonguildofgoldsmiths.com If you cannot see all the pictures on the new Website, you may need to hit your "F5" key a couple times to clear out your history. The **WGG Webmaster** position is being filled by a private contractor, and Bodil Lund directs his work. The plan is to update the Website on a quarterly basis. You can review your Member Page on the site, and update your information, emailing it to Bodil (bclund@cox.net) for the next website update. Visit your WGG website at <http://www.washingtonguildofgoldsmiths.com>.

For members who already have their own member page on the WGG site, *PLEASE* review and *UPDATE* your page with new photos, links, etc. and send updates to Bodil bclund@cox.net as soon as possible! If you do not yet have your OWN PAGE, it is really easy to get one going. Contact Bodil.

METALWORK 2014 News

With applications still coming in for The Metalwork 2014 Show, it's an exciting and busy time! We are working to get ready for "intake" for jurying at Michael Schwartz's studio, Creative Metalworks, on May 3rd 10am-1pm.

Last week, **Jan Mandel**, the Head of the Design Team, **Nick Barnes**, and a few others met at Gallery B to assess the gallery and begin making the preparations for the show in November. WOW - It's going to be a beautiful show!

We are fortunate to have talented, hard working committee heads who will appreciate your volunteering:

Marla Rudnick- Head of Take-in/ Pick-up(marlasrud@netscape.net)

Puneet Goyal- Head of Publicity (puneetdk@yahoo.com)

Jan Maddox- Head of Advertising in our Catalogue---**Needs Help!!!** She needs either help contacting perspective advertising buyers or contacts of businesses with whom you do business.

Please contact Jan to find out how you can help! (janmaddox0000@yahoo.com)

The online calendar has been set up. (Call ME for more information on that.) We will have a computer at the next meeting AND on May 3rd so people can sign up or get help to do it at Drop-off. Thank you so much for all your work!

Please volunteer and call Tyler at 1-800-HELP-TY, or at home at 703-978-3435.

Tyler Kulenguski, VP and Show Chair

CLASSIFIEDS

For Sale: BONNY DOONE 10,000lb Hydraulic Press for \$400 OBO, includes misc pads etc. Paid \$900. Tabletop. Comes with stand. Run as is, call if interested. Will deliver to Rockville area. Call Carrie Singer 304-876-9032 for more information.

An Assistant Manager Position at a fine jewelry store is available for part or full time in downtown Washington, DC. The ideal candidate is: flexible, motivated, friendly, fluent in English, good with people, detail oriented and organized. Knowledge of website management and Point of Sale software is a plus. If interested please send your résumé to ibarbieri@msn.com

Consider donating your extra tools/supplies to the WGG for future workshops. Contact Johnnie Ginns

WGG Members: Do YOU have something to sell or buy? You can find what you want among the Guild members.

WGG 3RD TUESDAYS GATHERINGS

March 3rd Tuesday – Was again a very stimulating and informative gathering to learn how to use the latest social media, presented by Dawn Benedetto. Dawn has been very successful in promoting art work through Facebook, Twitter and other media. Don't miss the April 3rd Tuesday!

If **YOU** have an idea for a 3rd Tuesday event – please let Nick know, so we can start the ball rolling!
Nick Grant Barnes, 3rd Tuesday Coordinator – nickgbarnes@verizon.net – (301) 641-1503.

Be sure to join us for the first 3rd Tuesday meeting of 2014, on January 21st.

WORKSHOP NEWS

By Mimi Harris, Workshop Coordinator

DONNA VERVERKA workshop: Carving A Wax Model For A Cast Ring

Workshop Dates: MAY 31 AND JUNE 1, 2014

Focusing on the creation of a ring, we will go through the process from design and layout to carving and preparing the ring to be cast. Workshop includes a step-by-step demonstration starting from preparing a ring pattern for a design, carving the wax ring and finishing the wax model so it is ready to be cast. If interested, please submit the completed WGG Application for Donna's Workshop below with payment.

ANDY COOPERMAN is doing a special workshop for the WGG: **Advanced Studio- Bench Tricks and Solutions** on Monday-Tuesday (May 5 & 6) following the weekend he juries entries for our METALWORK 2014 Show. The application for his workshop is a couple pages farther in this Newsletter. If interested, please submit the completed WGG Application for Andy's Workshop below with payment. Here's a peek at Andy's work:



There are still some seats available in both Andy's and Donna's workshop – 1st come 1st served

ANNOUNCING FUTURE WORKSHOPS.....

JAYNE REDMOND IS COMING!! The WGG, together with The National Enamellists' Guild are hosting a wonderful workshop. **Jayne Redman** is presenting "Making Multiples with Blanking Dies" Nov. 7-9, 2014, using Susan Kingsley's book, [Hydraulic Die Forming for Jewelers and Silversmiths](#) as a reference.

One-piece blanking dies allow you to easily cut out precise duplicate shapes from silver, gold and other non-ferrous sheet metals. Jayne Redman has been using this method for her own production jewelry for 18 years and has developed ways of creating dies and blanking multiples that dramatically speed up the production process. In this workshop, you will learn how to develop patterns for this process and the method of sawing dies from glad stock tool steel. You will be amazed at how quickly you can go from original idea to duplicated shape as your make and use your own blanking dies during the class. Jayne will be demonstrating her own inventive methods of forming, connecting and engineering. This is a process-oriented, not project-oriented workshop, although, if you have a specific design in mind, Jayne would be happy to work with you to problem solve. Please feel free to contact her at www.jayneredmanjewelry.com with any questions. *Watch your email for details and applications.*

NICK BARNES is going to do a **FOLD FORMING WORKSHOP** with us. Date to be announced.

DON STUART, a wonderful, longtime friend of the WGG will be coming from Canada to do a workshop. These are some of the choices we have. **Let Mimi know which one is of most interest to you.**

- simple (primitive) casting techniques
- rendering and sketching
- basic stone setting
- model making (carving waxes, rubber molds, etc.)

Let me know your choice.

My e-mail is mimi4july@yahoo.com or contact Cyd Rowley, Co-Coordinator cydrowley@mac.com

Washington Guild of Goldsmiths 2014 WORKSHOP APPLICATION FORM

DONNA VERVERKA CARVING A WAX MODEL FOR A CAST RING

May 31 and June 1, 2014, 10am–5pm

(12 STUDENTS MAX –First Come, First Served)

Bring lunch or go by car to several nearby restaurants

WORKSHOP APPLICATION

I am : (check one) ___WGG Member ___ Non-member

Dates: Saturday and Sunday, May 31 and June 1, 10:00 – 5:00pm

Location: CAN (Capitol Arts Network), 12276 Wilkins Ave., Rockville, Maryland 20852

Cost: \$190 WGG Members - \$230 Non-members

Membership is \$35, save \$5 on this workshop & more on future events by joining now!

Materials Fee: Minimal material fee at workshop

Name _____

Address _____

Phone (____) _____ **Work Phone** (____) _____

E-Mail _____

Make checks payable to WGG and mail with SASE(Self Addressed Stamped Envelope) for confirmation to:

Workshop Registrar,
Nella Fischer
15100 Interlachen Drive, #414
Silver Spring, MD 20906

Registration Questions? Call Nella at 301-598-9417

TOTAL AMOUNT ENCLOSED: \$ _____

Other Questions? Call Workshop Coordinators: Mimi Harris (703) 204-9106 or 301 529-8029
or Cyd Rowley (301) 996-2089

Instructor Bio - Donna Veverka is a Boston based studio jeweler. She creates limited edition and one of a kind jewelry that is inspired by classical and renaissance architecture. Her work has been featured in Metalsmith and American Craft magazines and is presently included in the exhibition Dare to Wear: Art as Fashion at the Columbus Museum in Columbus, Georgia. She participates in Art and Craft fairs around the country including the 2013 Smithsonian Craft Show and the ACC shows. Donna holds a BFA in metalsmithing from The University of the Arts in Philadelphia, PA and an MFA in sculpture from the Massachusetts College of Art and Design

Washington Guild of Goldsmiths 2014 WORKSHOP APPLICATION FORM

ANDY COOPERMAN

ADVANCED STUDIO – BENCH TRICKS AND SOLUTIONS

Monday & Tuesday, May 5 & 6, 2014, 10am–5pm

(12 STUDENTS MAX –First Come, First Served)

Do you want to improve your efficiency in the studio, learn tricks and short cuts that can get you out of sticky situations? The stuff they DIDN'T teach in school? **Then this IS the workshop for you!**

Packed with information presented in a fast paced, entertaining manner, this two- day demonstration only workshop will help you gain a new perspective on some basic tools and techniques from soldering and riveting to the flexible shaft machine and open your eyes to new possibilities such as making small ingots at the bench, working in the semi-molten “Hot Zone” and customizing hand tools. It may even change the way that you approach your work. The nuts and bolts of the studio space itself may also be discussed.

Bring lunch or go by car to several nearby restaurants

WORKSHOP APPLICATION

I am : (check one) ___ WGG Member ___ Non-member

Dates: Monday & Tuesday, May 5 & 6, 10:00 – 5:00pm

Location: CAN (Capitol Arts Network), 12276 Wilkins Ave., Rockville, Maryland 20852

Cost: \$175 WGG Members - \$215 Non-members

Membership is \$30, save \$10 on this workshop & more on future events by joining now!

Name _____

Address _____

Phone (____) _____ **Work Phone** (____) _____ **E-Mail** _____

Make checks payable to WGG and mail with SASE (Self Addressed Stamped Envelope) for confirmation to:

Workshop Registrar,
Nella Fischer
15100 Interlachen Drive, #414
Silver Spring, MD 20906

TOTAL AMOUNT ENCLOSED: \$ _____

Questions about Registering? Call Nella Fischer (301) 598-9417

Other Questions? **Call Workshop Coordinator: Mimi Harris (703) 204-9106 or 301 529-8029** or
Cyd Rowley (301) 996-2089

Instructor Bio – Andy Cooperman – Since 1984, metalsmith, teacher and writer, Andy has lived and worked in Seattle where he builds jewelry and small objects for museum exhibitions, galleries and private clients. His work has been featured in many publications is presently included in the Victoria and Albert Museum, Central College in Pella, IA and the Tacoma Art Museum. As a teacher, Andy's goal is to help students acquire creative problem solving tools that will allow them to see beyond the standard solutions. Please visit his website: www.andycooperman.com

TOUCHSTONE CENTER FOR THE CRAFTS

The WGG has maintained a close relationship with Touchstone over many years. It offers unique workshop opportunities. Touchstone is a unique three-seasons craft school in the beautiful Laurel Highlands, only 60 miles southeast of Pittsburgh, Pennsylvania. Founded in 1972 as Pioneer Crafts Council, Touchstone's original mission was to foster interest in the preservation of traditional mountain crafts. Today, this unique craft school has expanded to include contemporary and experimental techniques in addition to traditional and historic methods in disciplines such as blacksmithing, ceramics, metals, textiles, glass, oil and watercolor painting, photography, printmaking and sculpture. As Pennsylvania's only residential craft school, Touchstone offers both beginners and seasoned artists more than one hundred week-long and weekend courses taught by some of North America's finest artists and artisans. <http://www.touchstonecrafts.org/> Touchstone Center for Crafts, 1049 Wharton Furnace Road, Farmington, PA 15437 – Phone: 724.329.1370 or 800.721.0177

DONATE TOOLS TO “MADE BY SURVIVORS”!

“Made by Survivors” is an international nonprofit and social enterprise, which employs and educates survivors of slavery and people at extreme risk, including many women and children living in extreme poverty. The jewelry program, led by Revere Academy graduate, Dianna Badalament, provides training in highly respected professions and wages high enough to pull people out of poverty and support themselves, independently. Beautiful jewelry and gifts made by survivor-artisans comply with Fair Trade standards and support women's empowerment, with 100% of profits going to support rescue and aftercare.

Donate any functioning, gently used tools to this important project by bringing them to the Revere Academy in downtown San Francisco. Or send an email christinedhein@yahoo.com to make arrangements to ship tool donations to her US address. The project is in desperate need of hand tools, especially Swiss or German hand and needle files. See the project's tool wish list for more details.

ONLINE JEWELRY INFO SITES

FROM SNAGNEWS: NEW WEBSITE FOR ENAMEL

Check out the new enamel website, "Grains of Glass." This is an "open studio" whose mission is to create a global website for enamellists.

Free On-Line tutorials in jewelry making from Beaducation:

http://www.beaducation.com/vids/all_in_category/7

Stuller Jewelry Supplies launched a new online bench-centric community, www.benchjeweler.com.

The website is designed to appeal to bench jewelers and hobbyists and blends social media with content from reference articles and tips for artisan-inspired photography. The website gives jewelers the opportunity to create a free myBench profile, access trade tools, news, and specials, and to interact virtually.

ORCHID Forum, the Ganoksin Website, international chat among master jewelers to novices at:

http://www.ganoksin.com/site-map.htm?utm_campaign=orchid-digest&utm_medium=email&utm_source=

From the Home Page, click “Join” (it’s free) and sign up for the daily digest of Q&A flowing around the globe!

www.StarvingArtistsLaw.com is a launch pad for artists looking for self-help legal information.

CALLS FOR ENTRIES (exhibitions & shows to enter)

Deadlines (in bold)

Monthly -Until Full - First Sunday Arts Festival on May 4, 2014 Downtown - Annapolis, MD 21401 The First Sunday Arts Festivals feature local artists and musicians at an outdoor event held on the first Sunday of the month from 12 noon to 5 pm in conjunction with First Sunday Arts. 2 exhibit areas: Whitmore and West Street that house about 90 vendors, with 3 performance areas. Admission is Free. West Street Business Association in Annapolis is the promoter.

May 4, 2014- CELEBRATE THE HEALING POWER OF ART

Manhattan Arts International 9th Annual "Celebrate The Healing Power of Art" exhibition. Jurors: Lilly Wei, NY art critic, Art in America magazine, and curator; and Renee Phillips, author and director, Manhattan Arts International. 50 artists will exhibit in this online exhibition, May 17-July 17, 2014. Open to all US and International artists working in 2D and 3D media. All styles, sizes and subjects. Cash, publicity and service awards. Entry deadline: May 4, 2014. Entry fee: \$30/1-3 entries; \$10 each add'l. Details and prospectus at link below. Contact: Manhattan Arts International | www.manhattanarts.com/Gallery/Healing-Power-of-ART/about.htm | renee@manhattanarts.com

May 31, 2014- PIP SQUEAK: SMALL WORKS, BIG VISION JURIED ART EXHIBITION – The Northbrook Public Library is seeking entries for its 12th annual juried art show. Works should be 12" or less in any direction for 2D and 9" for 3D. Artists 18 years and older, submitting original works no more than 3 years old. Viewable by all ages. Top prize is a \$2000 purchase prize. Entry fee. Details: 847-272-7035 <http://www.northbrook.info/art-exhibitions> artshow@northbrook.info

June 2, 2014 – Linus Galleries, UNDRESSED exhibition For more information visit: <http://linusgallery.com/call-for-entries/underssed-june-2/> Admiration for both the male and female form has always been celebrated within the arts. For this call for entries we want to see tasteful and sophisticated representations of the human physique, both subtle and bold without being explicit. We want to present to the art world a collection that embodies attraction and sexuality that everyone can appreciate. Calls are open to all local, domestic, national and international professional and amateur artists. All art mediums will be considered in this call for submissions, from photography, wall sculpture, fabric, mixed media, all paintings and drawings including, oil, acrylic, pastels, ink, graphite, etc. Sizes up to 12 feet are acceptable. Work must be able to be hung on a wall to be considered for the live exhibition. Freestanding 3D artworks will be displayed online only. We are now accepting video and poetry entries for online shows. Accepted entries for this online exhibition will be judged again in the coming months for a collective live exhibition at our Los Angeles gallery. The artists will be asked if they wish to submit their artwork for the collective exhibition, which is not a requirement to being a part of the online exhibition. Eligible media Craft, Design, Film/Media Arts, Folk/Traditional Arts, Photography, Public Art, Visual Arts

June 2, 2014 - 5TH ANNUAL NATURE & WILDLIFE EXHIBITION

Call for Artists \$5,000 IN AWARDS: The St. Augustine Art Association presents the 5th Annual Nature & Wildlife Exhibition, July 26-Aug 31, 2014. This fine art juried exhibit features 2D & 3D original works of art depicting the beauty and diversity of nature: landscapes, plants, birds, wildlife, etc. ALL MEDIA; No giclees or enchanted giclees; \$2,000 top prize. Our gallery is located in the heart of the Historic District with heavy tourist traffic and local art patrons. Good opportunity for sales. Deadline June 2. Apply online or download prospectus www.staaa.org Contact: Diane Bradley | 904-824-2310 | www.staaa.org | dianebradley@staaa.org

June 16, 2014 - . Lillstreet's 7th annual juried ceramics exhibition is dedicated to the art of setting the table. Ceramic artists are invited to submit contemporary tableware in the form of a place setting. A minimum of 4 pieces are required to qualify as a set: dinner plate, salad plate, bowl, and one cup or mug. However, sets containing more than 4 pieces are welcome. Entries will be evaluated on: functionality, design, utilitarian comfort, aesthetics, and cohesiveness of the set.

June 16, 2014 - Virginia Lake Festival July 17-19, 2014 Virginia Avenue - Clarksville, VA 23927 Show Promoter: Clarksville Lake Country Chamber of Commerce. For details and application contact director@kerrlake.com Web: www.clarksvilleva.com

July 1, 2014- Labor Day Weekend Art & Craft Festival- Ocean City, MD – two-day show August 29 - 31, 2014 For details and application, contact oceancityshows@gmail.com Web: ocshows.com

July 15, 2014 - Burke Centre Festival Burke Centre Festival Grounds - Burke, VA 22015 September 6 - 7, 2014 For details and application, contact festival@burkecentre.org Web: http://www.burkecentreweb.com/sub_category_list.asp?category=37&title=Annual+Festival

Sept 1, 2014 - Ornament Show & Sale – Dowell, MD - November 15, 2014 - January 3, 2015 – Promoter: Annmarie Sculpture Garden & Arts Center. For details and application, contact exhibits@annmariegarden.org Web: www.annmariegarden.org

Sept 12, 2014 – CraftForms 2014 20th Annual Int'l Juried Exhibition, Dec.5-Jan.31, 2015 Wayne, PA Online application at www.craftformsentry.org . Also see website: www.craftforms.org Very highly regarded show.

Oct 1, 2014 - Fallfest of Fine Arts and Craft Show – Ocean City, MD - November 8 - 9, 2014 Roland Convention Center For details and application, contact oceancityshows@gmail.com Web: ocshows.com

WGG BOARD OF DIRECTORS **Officers and Coordinators**

President: **Johnnie Gins**
Email: jljgins@aol.com
Phone: (301) 299-8670; c: (301)404-4248
Potomac, MD 20854

Secretary: **Mia Schulman**
Email: mia75@comcast.net
Phone: (301) 216-5546
Gaithersburg, MD 20877

Vice President: **Tyler Kulenguski**
Email: kulenguski@verizon.net
Phone: (703) 978-3435
Annandale, VA 22003

Treasurer: **Bodil Lund**
Email: bclund@cox.net
Phone: h: (703) 425-4095 b: (703) 593-7301
Annandale, VA 22003

Workshop Coordinator: **Mimi Harris**
Email: mimi4July@yahoo.com
Phone: (703) 204-9106
Annandale, VA 22003

Workshop Co-coordinator: **Cyd Rowley**
Email: cydrowley@mac.com
Phone: h: 301-681-5446 b: 301-996-2089
Silver Spring, MD 20901

CCC Representative: **Winifred Anthony**
Email: winifred.anthony@verizon.net
Phone: (301) 598-3710
Silver Spring, MD 20906-1433

Workshop Registrar: **Nella Fischer**
Email: nellafischer@comcast.net
Phone: (301) 598-9417
Silver Spring, MD 20906

NEW:

Membership Coordinator: **Ilana Rappaport**
Email: Rappa2@verizon.net
Phone: (301) 229-0308
Bethesda, MD 20817

Communications Coordinator: **Sandra Zacharia**
Email: artjewelsz@gmail.com
Phone:
Living in Israel 2014

Newsletter Editor: **Sherry Terao**
Email: terao@verizon.net
Phone: (301) 593-5469
Silver Spring, MD 20901

3rd Tuesday Coordinator: **Nick G. Barnes**
Email: nickgbarnes@verizon.net
Phone: (301) 641-1503
Silver Spring, MD 20904

Webmaster: Contact Bodil Lund, Treasurer (above)

NEWSLETTER DEADLINES: (on the **20th** of the month)

June 20th for Summer 2014
September 20th for Fall 2014
December 20th for Winter 2015
March 20th for Spring 2015

Contributed articles and suggestions for the Newsletter are ALWAYS welcome!



© Washington Guild of Goldsmiths 2014

JOIN OR RENEW YOUR MEMBERSHIP

Type of Membership: Individual One Year \$30 (Two Year no longer available)

Full-Time Student \$20

NEW Member -or- Renewing Member

TOTAL ENCLOSED: \$ _____

ALL MEMBERSHIPS RENEW IN JANUARY - Due By Feb. 1st *

FIRST TIME NEW MEMBERS after 6/30 pay only ½ ANNUAL Dues

Please provide the following information about yourself and your business as you would like it to appear in the WGG Membership Directory:

Name: _____

Business Name: _____

Address: _____

City: _____ State: _____ Zip: _____

Home Phone: _____ Business Phone: _____ Cell Phone: _____

Fax: _____ Email: _____

Website: _____

WGG going GREEN – If you want to receive the newsletter BY EMAIL only, check here.

VOLUNTEERS ARE ALWAYS WELCOME AND NEEDED

Please check those areas where you could help the Guild with its activities & programs:

- | | |
|---------------------------------------------------|-------------------------------------------------------|
| <input type="checkbox"/> Third Tuesday Activities | <input type="checkbox"/> Workshop Committee |
| <input type="checkbox"/> Teach Workshops | <input type="checkbox"/> Biennial Show |
| <input type="checkbox"/> Advertise and Promotions | <input type="checkbox"/> Hospitality |
| <input type="checkbox"/> Newsletter | <input type="checkbox"/> Contribute to the Newsletter |
| <input type="checkbox"/> Website | <input type="checkbox"/> Legal Advice for Artists |
| <input type="checkbox"/> Materials Supply Sources | <input type="checkbox"/> Serve on Guild Board |
| <input type="checkbox"/> As needed, just call me | <input type="checkbox"/> Other _____ |

Signature: _____ **Date:** _____

Please make checks payable to the WGG and mail to:

WGG Treasurer, Bodil Lund – 4314 Planters Court, Annandale, VA 22003 (703) 593-7301

Membership inquires – Ilana Rappaport, Membership Coordinator Rappa2@verizon.net

***To be included in the Guild Directory.**

Rev: 4/2014



Washington Guild of Goldsmiths

SPRING 2014 - NEWSLETTER

Dated Material

Please Read Now



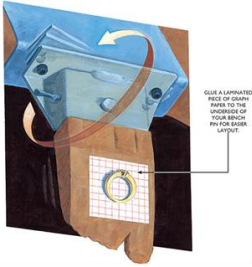
Washington Guild of Goldsmiths

**Sherry Terao
720 Burnt Mills Ct.
Silver Spring, MD 20901**

BENCH TIPS

Bench Tip from Alan Revere

Grid Locked: Turning Your Bench Pin into a Precision Layout Tool



Graph paper isn't just for plotting mathematical data. It's a tool you can use to turn your bench pin—if it's mounted on a GRS Bench Mate that allows it to be removed and flipped over—into a precision layout tool, making it even more functional.

Find some graph paper and cut out a rectangle that will fit onto the underside of your bench pin. Laminate the graph paper in plastic for durability. Center it on the underside of your bench pin and glue it in place.

Anytime you need to lay out a piece of jewelry to find the right spot for drilling, sawing, or other precision work, just place it on the grid. Center the piece and use the grid to help lay out and check your work.

This series of tips is from Alan Revere's continuing column in MJSA Journal. Find more tips like this one in Mr. Revere's book, 101 Bench Tips, published by MJSA. Illustration is by Sean Kane. [Order now!](#)

GREEN JEWELRY – RECYCLED from Green Jewelry News vol.3 no.1



Left: Bombay Shards Necklace in recycled glass and sterling by Rebecca Ward



Right: Longshore Drifter Necklace in sterling and pebbles by Rebecca Ward

Rebecca Ward is a studio jeweler who "tastefully transforms trash" such as glass collected from demolition yards and beaches, vinyl records, and other recycled materials to create jewelry with an eco-aesthetic. She shared the advantages of working with recycled materials including, finding materials and lower materials costs. She also discussed several challenges, including a lack of consistent supply, lower perceived value, cost of jewelry shifting from materials to design and manufacture, and the challenge of designing a wearable piece of jewelry from found objects. She also warned the audience to be aware of the difference between recycled and repurposed materials. As she explained, recycled materials have been discarded after being used for their original purpose, then collected, transformed and reused in a new form. Recycling gives materials a new life before going to the landfill. Repurposed materials are often purchased new from the manufacturer and labeled "repurposed" because they are being used for something other than the original intended purpose. Unfortunately, these types of "repurposed" items have the same carbon footprint as newly manufactured materials.

TIP for Artists from www.brainpickings.org

Advice from Artists on How to Overcome Creative Block, Handle Criticism, and Nurture Your Sense of Self-Worth by Maria Popova; Mastering the balance of restriction and imaginative play, or why unbridling your self-worth from your professional success is essential for happiness. For details, here's the link:

http://www.brainpickings.org/index.php/2014/02/28/creative-block-krysa/?utm_content=bufferf93c8&utm_medium=social&utm_source=twitter.com&utm_campaign=buffer